


## THE LINX ADVANTAGE

- Requires no alteration to the stomach
- Reduces gas and bloating
- Preserves the ability to belch and vomit
- Patients typically go home within 24 hours and resume a normal diet

Generally expected user experience.

## IS IT TIME FOR LINX?

Call **855-REFLUX-0**  
or visit **linxforlife.com**  
to learn more about LINX  
and connect with a GERD  
Specialist near you.

  
**Heartburn Center  
of California**  
365 Lennon Lane, Suite 250  
Walnut Creek, CA 94598  
Phone: (925) 932-6330  
Fax: (925) 932-0139



Torax® Medical, Inc.  
4188 Lexington Avenue North  
Shoreview, Minnesota 55126, USA  
www.toraxmedical.com • www.linxforlife.com  
info@toraxmedical.com  
Phone: 1 (651) 361-8900

Doc. No. 3579-1 Rev4  
Date of Issue: Nov 2014

The LINX® Reflux Management System is indicated for those patients diagnosed with Gastroesophageal Reflux Disease (GERD) as defined by abnormal pH testing, and who continue to have chronic GERD symptoms despite maximum medical therapy for the treatment of reflux.  
**Caution:** Federal law (USA) restricts these devices to sale by or on the order of a physician.  
**Contraindications:** Do not implant the LINX® System in patients with suspected or known allergies to titanium, stainless steel, nickel or ferrous materials. **Warnings:** The LINX® device is considered MR Conditional in a magnetic resonance imaging (MRI) system up to 0.7-Tesla (0.7T). Laparoscopic placement of the LINX® device is major surgery. **General Precautions:** The LINX® device is a long-term implant for use in patients 21 years or older. Medical management of adverse reactions may include explantation and/or replacement.

Potential Risks Associated with LINX® System: dysphagia, stomach bloating, nausea, odynophagia, increased belching, decreased appetite, inability to belch or vomit, flatulence, early satiety, device erosion, device migration, infection, pain, and worsening of preoperative symptoms.

For more information on the LINX Reflux Management System, contact your physician or Torax Medical, Inc. For full patient information visit [www.linxforlife.com](http://www.linxforlife.com) or [www.toraxmedical.com](http://www.toraxmedical.com).

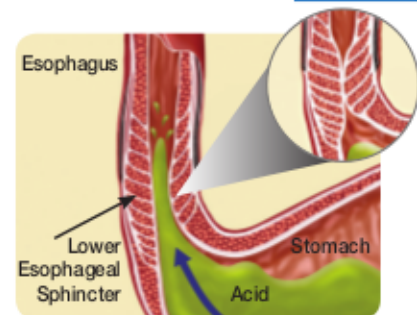
  
**STOP GERD  
AT ITS SOURCE**

Clinical data of the LINX® Reflux Management System has demonstrated substantial reductions in total acid exposure time.

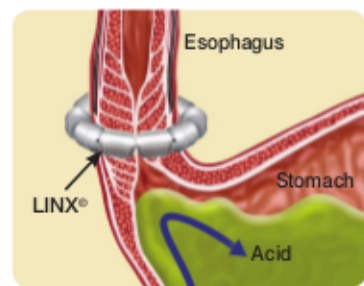


**LINX® IS A  
REVOLUTIONARY  
SOLUTION  
FOR GERD**

## HOW LINX® WORKS



GERD (*Gastroesophageal Reflux Disease*) is caused by a weak muscle called the lower esophageal sphincter (LES) that allows acid and bile to flow back from the stomach into the esophagus, creating pain and often causing damage to the lining of the esophagus.



LINX is a flexible ring of small magnets placed around the LES during a minimally invasive procedure. The strength of the magnets helps keep the weak LES closed to prevent reflux.



When you swallow, LINX opens temporarily to allow food and liquid to pass into the stomach.

## PROVEN RESULTS . . . LIFE CHANGING BENEFITS

**92%** of patients achieved freedom from daily medication<sup>1</sup>



**98%** of patients required no change to their daily diet from heartburn<sup>1</sup>



**98%** of patients had no bothersome heartburn affecting their sleep<sup>1</sup>



**94%** of patients were satisfied with their condition after LINX<sup>2</sup>



1. Data on file with Torax® Medical. 2. Ganz et al., Esophageal Sphincter Device for Gastroesophageal Reflux, N Engl J Med 2013; 368:719-727.